



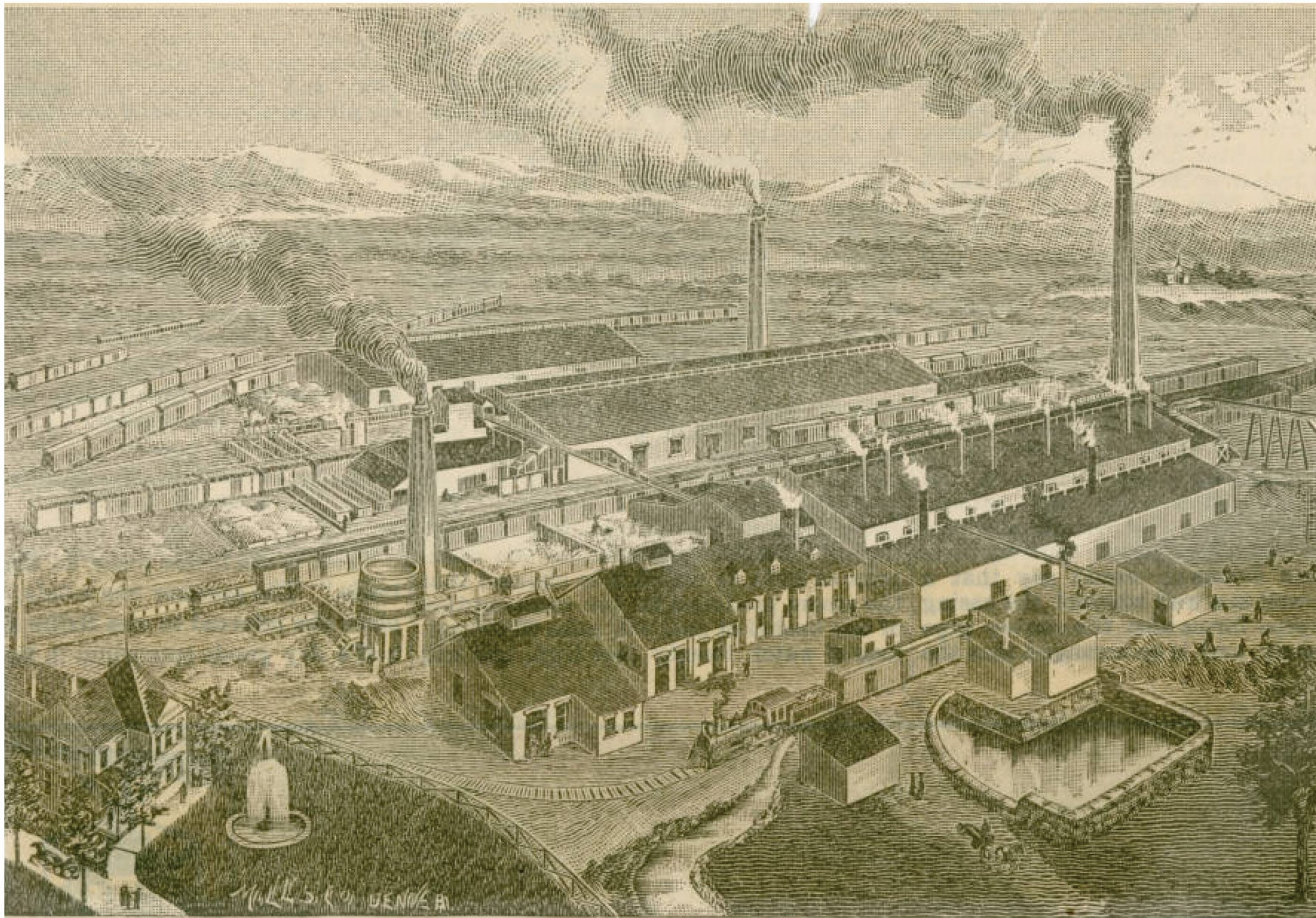
GES: Rooted in Resilience



Central 70



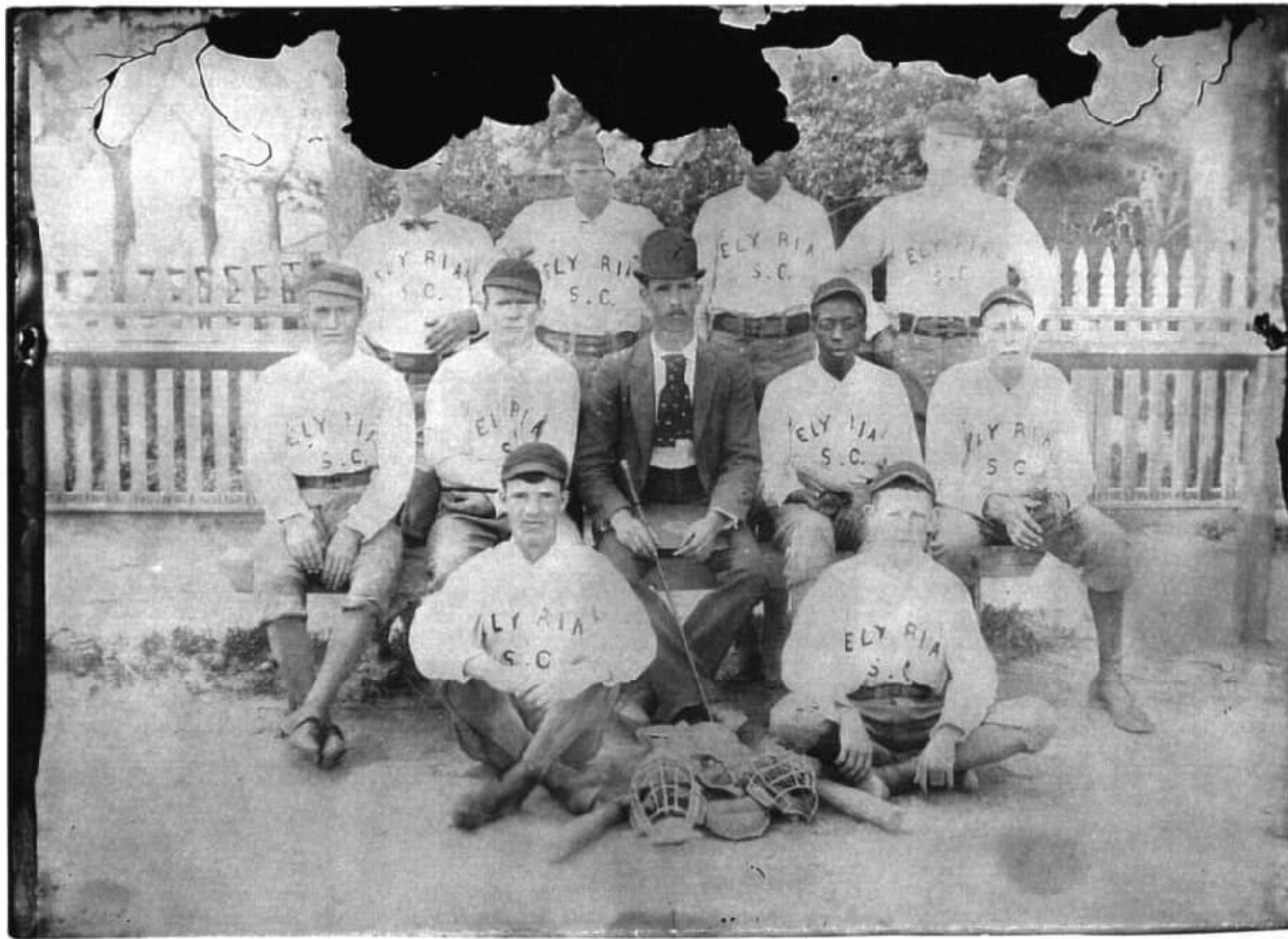
FROM THE LATE 1800s, immigrants have called the neighborhoods of Globeville, Elyria and Swansea (GES) home. Globeville was originally settled independently around the Globe Smelting and Refining Company, eventually becoming part of Denver in 1902. Elyria and Swansea were likewise founded and annexed separately – Swansea in two phases (in 1883 and 1902) and Elyria in 1902. Over the years, the neighborhood has evolved and seen Central and Eastern European settlers move on, replaced by new residents with Latin American roots. Sitting at the literal crossroads of Interstates 25 and 70, the nearly 10,000 residents of GES today face the evolving impacts of massive nearby infrastructure projects that include the National Western Center, the Platte to Park Hill drainage improvements and the Central 70 Project. While these projects have started to bring the attention, funding and infrastructure the GES neighborhood has been lacking for years, they also bring new and very real concerns about gentrification, rising taxes and rent, and displaced residents.



THE GLOBE SMELTING AND REFINING COMPANY, DENVER.

Drawing of the Globe Smelting and Refining Company Complex. The plant was originally named the Holden Smelter in 1886. In 1889, it was reorganized and renamed the Globe Smelting and Refining Company and the houses that sprang up around the plant became Globeville. In 1899, the Globe joined a number of other smelting companies to form a powerful trust, the American Smelting and Refining Company (ASARCO), with the clout to negotiate rates for labor, freight, ore, smelting and political influence. The company had its ups and downs over the next century until in 1993 a group of residents won a lawsuit against the corporate giant, alleging air, soil and groundwater pollution. A second group of citizens was awarded funds in 1997 to remediate the soil in the southern section of Globeville. ASARCO declared bankruptcy in 2006.

Courtesy of the Denver Public Library



Elyria baseball team

Date unknown, Denver Public Library



Globeville children working in community garden

Date unknown, Denver Public Library



Community gathering

Date unknown, Denver Public Library

DID YOU KNOW?

Globeville, Elyria-Swansea has one of the largest Hispanic populations in Denver. Nearly 84% of the residents in Elyria-Swansea and 68% in Globeville identify as Hispanic.



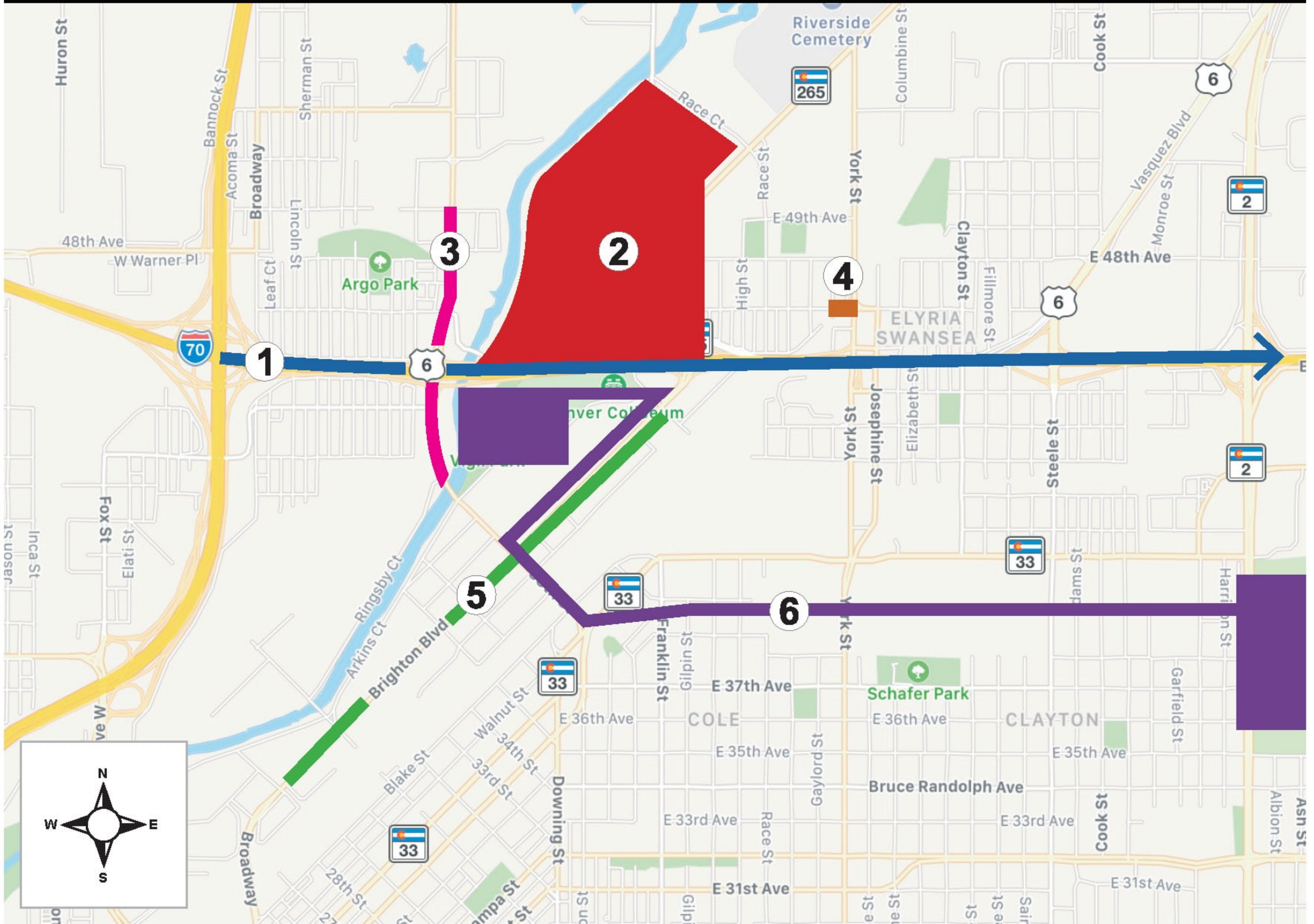
National Western Stock Show, 1907

Courtesy of the National Western Archives



Nat'l Western 1907

NEIGHBORHOOD CONSTRUCTION PROJECTS



①  Central 70 Project

②  National Western Center

③  Washington Street Study

④  **COMPLETE**
47th and York
Pedestrian Bridge

⑤  **COMPLETE**
Brighton Boulevard
29th - 44th Street

⑥  **COMPLETE**
Platte to Park Hill Project
- 39th Avenue Drainage